

archiproducts®

March 21, 2024
By Sabine Schweigert

Lucifer Lighting, beginning with imagination and inspiration

At Light+Building 2024, Texas-based Lucifer Lighting has shown its advanced and awarded lighting solutions for architects

Lucifer Lighting, a family-owned producer of advanced lighting products for architects, retailers, and institutions worldwide, recently showcased its precision-engineered lighting solutions at Light+Building in Frankfurt. The exhibition featured their current product offering, including **Atomos**, **Cylinder**, **STELLR**, **Track**, and **Fraxion4**. Also Lucifer Lighting's latest innovation, **the Micro Downlight**, was presented in an engaging display where art, design, and light intersect. The exhibition space was conceived by Gensler, an internationally renowned design practice, who previously designed the brand's showrooms in New York and San Francisco.



Track by Lucifer Lighting

With a company history extending over four decades, Lucifer Lighting is renowned for its architectural and minimalist lighting, aiming to enhance experiences by illuminating spaces and objects.



Monopoint by Lucifer Lighting at the Gabriela Hearst Store in Los Angeles

The portfolio satisfies the needs of important architectures and interiors worldwide, as **Roselyn Mathews, Chief of Staff and VP of the Brand**, explains with a prestigious example: *“Among our noteworthy projects, The Gabriela Hearst Store in Los Angeles stands out to me. The lighting designer employed our Monopoints for this project. Our Monopoint fixture boasts an elegant design, featuring an inventive elbow built into the fixture body, enabling a full 90-degree tilt and drop lengths of up to 4’, offering extended adjustability.”*



Monopoint by Lucifer Lighting at the Gabriela Hearst Store in Los Angeles

“We believe that the lighting design in the store played a crucial role in bringing the project to life and elevating the overall interior design experience. Our Monopoint fixtures seamlessly integrate into the store’s design, effectively showcasing the prowess of our products.” Other important projects are **flagship stores for Apple, Chanel, Cartier, Louis Vuitton** and many more as well as hotels such as the **Peninsula Hotels, the Four Seasons, The Ritz Carleton hotel groups** and many more.



Monopoint by Lucifer Lighting at the Gabriela Hearst Store in Los Angeles

Lucifer Lighting's flagship product, **STELLR**, seamlessly combines architectural and decorative lighting. Since its 2020 launch, it has **gathered multiple awards**. Its organic shape and minimalist design allow it to function as a high-performance wall, ceiling or pendant lamp.



STELLR ceiling lamp by Lucifer Lighting

It offers both volumetric and directional lighting with two independently controlled light sources. Like all products in Lucifer Lighting's extensive portfolio, STELLR is **designed, developed, prototyped, and assembled** at the company's own **factory in Salado Creek, Texas**. This is where inspiration, engineering, and quality control converge, with a daily commitment to sustainability. More than 150 employees work here using wind energy, xeriscaping, post-consumer recycled packaging and daylighting throughout all buildings.



Atomos by Lucifer Lighting

To better understand the excellence in design and technology, Lucifer Lighting is putting into its products, some of the latest products can state clear examples.

Atomos is an integrated, mud-in applique for seamless installation in ceilings from 1.3 to 5 centimeters thick, which can be installed in dry and wet locations. Its innovative design uses spring-loaded retention rollers to ensure that fixtures remain snug against the ceiling plane through constant force mechanics. Atomos features an integrated driver, simplifying installation without requiring extra closet or attic space for power supplies, a common issue with other manufacturers. It is available with a warm-dim color profile, providing a cozy and intimate atmosphere. Whether for new construction or remodel projects, Atomos with its small apertures offers discrete aesthetics with impressive performance. It is available in both round and square shapes, five standard finishes or almost any kind of custom finish.



Cylinder by Lucifer Lighting.

The Cylinder spot is the ideal solution for highlighting art, objects, areas and architectural details. Its minimal cylindric design is extremely versatile and it can be applied for dry, damp and wet surroundings. Versions of Cylinder include surface mount, unibody, wallmount or cable pendant.



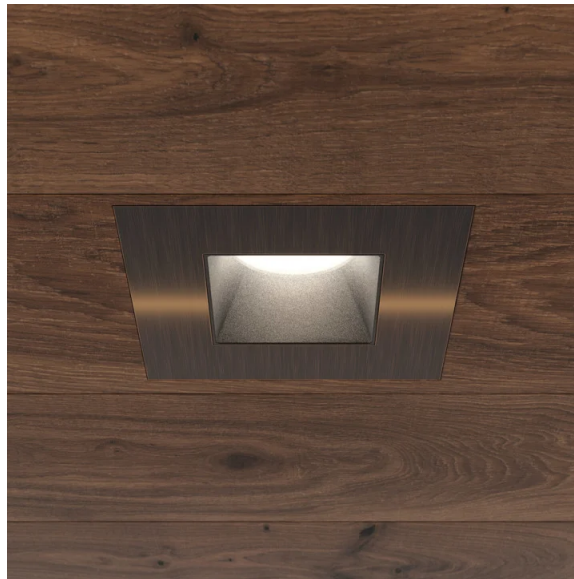
Squylinder by Lucifer Lighting.

The revolutionary **Track lighting system** eliminates visual distractions by integrating the adapter and driver into the fixture and all mechanisms, mounts, and power supplies within a proprietary, single-circuit track. This minimalist fixture is offered in two sizes, with recessed trimless, pendant, or surface mounted options, and the ease of one-handed, pop-in installation and exceptional adjustability.



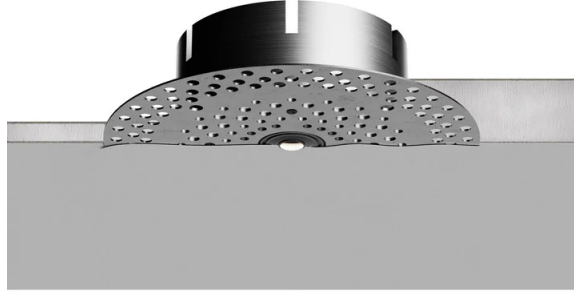
Track by Lucifer Lighting.

The award-winning Fraxion family of downlights now includes the lowest-profile housing, ever in the Fraxion history. Designed for ease of use in shallow plenum spaces and to easily accommodate design changes, this shallowest-in-the-market fixture also offers the smooth, evenly distributed wallwashing designers have been asking for. In addition, generous spacing requirements offer more light with fewer fixtures, making it easier to work with ceiling constraints, while decreasing costs and visual distractions. Available in two apertures, the original 10 centimeter, and now, an even more diminutive 7,6 centimeter.



Fraxion by Lucifer Lighting.

The latest innovation from Lucifer Lighting is the **Micro Downlight**, the smallest fixture they've produced so far. With a diameter of 12.7 millimeters and angles of 20, 30 or 40 degrees, it emits up to 900 lumens, approaching the luminosity of a traditional 75-watt light bulb.



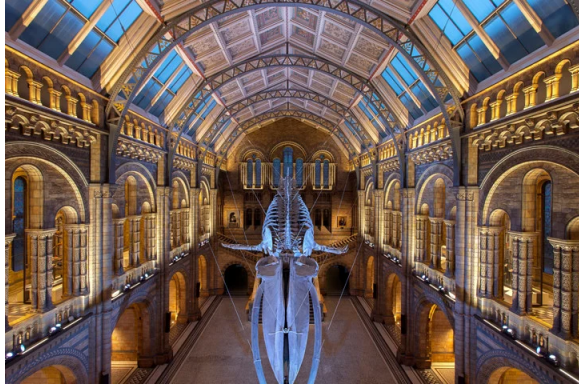
Micro Downlight, Lucifer Lighting

The excellence of the Lucifer Lighting portfolio, which includes a variety of luminaires and lighting fixtures, is a result of the Mathews family's dedication and passion over several decades. With a team of around 150 employees, they have successfully grown and developed this business. In addition to fortifying the company, the family is also committed to **substantial philanthropic efforts**, providing funding and scholarships to museums and performing arts centers through its design and architectural associations.



Suzanne Mathews, Director of Lucifer Lighting Company, Gilbert Lang Mathews, Chief Executive Officer and founder of Lucifer Lighting Company, Roselyn Mathews, Chief of Staff and Vice President of Brand, Alexandra Mathews, Executive Vice President at Lucifer Lighting

Modern and contemporary art is indeed a shared passion among all members of the Mathews family. Without ever neglecting the company: *"We are delighted to have participated in Light + Building Frankfurt and present our cutting-edge lighting solutions to a global audience,"* says **Roselyn Mathews, Vice President of Lucifer Lighting**. *"Our team has worked tirelessly to develop exceptional lighting fixtures that radically redefine the way that our clients see, enjoy, appreciate, and experience the world around them. My family and I look forward to meeting you in Frankfurt to show you our products first-hand and demonstrate our commitment to innovation and excellence."*



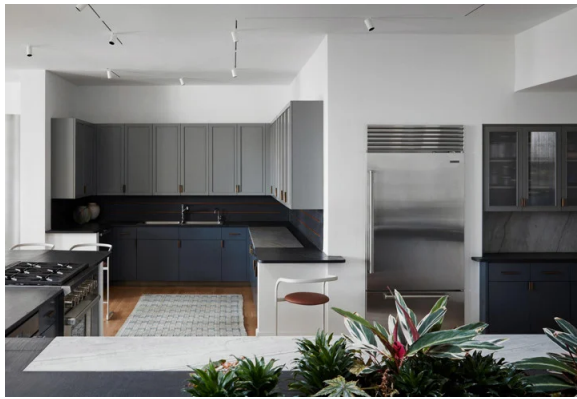
Museum of Natural History London, a reference project by Lucifer Lighting



Wildcat residence, a reference project by Lucifer Lighting



West Village Home, a reference project by Lucifer Lighting



Private residence, a reference project by Lucifer Lighting



Chanel Madison Avenue, a reference project by Lucifer Lighting