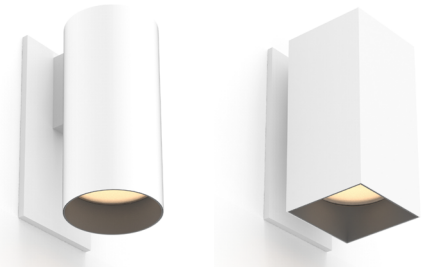


WALL SCONCE LVS CYLINDER & SQUILINDER®

PROJECT NAME:	TYPE:
---------------	-------



Exceptional adaptability and performance in classic and modern silhouettes that mount seamlessly and invisibly to the wall.

ORDERING INFORMATION

SHAPE	TYPE	RATING	BODY FINISH	BAFFLE FINISH	CRI / WATTAGE PACKAGE	CCT	LOWER OPTIC (UGR)	UPPER OPTIC (UGR)	DRIVER	LOWER MEDIA	UPPER MEDIA
		2							LVS		
CW2 Cylinder	DF Downlight	2 Wet (IP65)	WH White	WH White	DOWNLIGHT (DF) STATIC WHITE 80S11A 80+ CRI, 11W, Dlvd. Lumens - 1232 80S17A 80+ CRI, 17W, Dlvd. Lumens - 1893 80S23A 80+ CRI, 23W, Dlvd. Lumens - 2470 90S11A 90+ CRI, 11W, Dlvd. Lumens - 1028 90S17A 90+ CRI, 17W, Dlvd. Lumens - 1626 90S23A 90+ CRI, 23W, Dlvd. Lumens - 2122 97S11A 97+ CRI, 11W, Dlvd. Lumens - 929 97S17A 97+ CRI, 17W, Dlvd. Lumens - 1428 97S23A 97+ CRI, 23W, Dlvd. Lumens - 1863	24 2400K* *(90+CRI only)	15 15° (<13)	00 DF Only* *(Required with DF fixture)	LVS Low Voltage System	3 Clear Glass Lens* *(Not available for Warm Dim)	9 Diffusion Lens* *(Required with UD fixture) LEAVE BLANK FOR DOWNLIGHT (DF)
SW2 Squilinder	UD Up / Downlight		AG Satin Silver	AG Satin Silver		27 2700K	20 20° (<10)	00 DF Only* *(Required with DF fixture)			
			AU Cashmere Gold	AU Cashmere Gold		30 3000K	25 25° (<10)				
			BB Burnt Bronze	BB Burnt Bronze	35 3500K	40 40° (<10)				4 Soft Focus Lens	
			AB Architectural Bronze	AB Architectural Bronze	40 4000K	60 60° (<16)				5 Frosted Glass Lens	
			BK Black	BK Black						6 Frosted Soft Focus Lens	
			CF Custom Finish* *(Consult Factory)	CF Custom Finish* *(Consult Factory)						7 Frosted Linear Spread Lens* *(Not available for Squilinder)	
					DOWNLIGHT (DF) WARM DIM 90W18A 90+ CRI, 18W Incandescent Profile 2700K - 1800K Dlvd. Lumens - 1099 Standard Profile 3000K - 1800K Dlvd. Lumens - 1113 *SEE PAGE 3 FOR DETAILED WARM DIM PROFILE COMPARISON.	WL 2700K - 1800K	20 20° (<10)	00 DF Only* *(Required with DF fixture)			
						WD 3000K - 1800K	25 25° (<10)				
					UP / DOWNLIGHT (UD) STATIC WHITE 80S11A 80+ CRI, 11W, Dlvd. Lumens - 1271 90S11A 90+ CRI, 11W, Dlvd. Lumens - 1092 97S11A 97+ CRI, 11W, Dlvd. Lumens - 959 *ALL DELIVERED LUMEN OUTPUTS AND T24 COMPLIANCE REFLECT 3000K PAIRED WITH 20° OPTIC AND SOFT FOCUS LENS.	24 2400K* *(90+CRI only)	15 15° (<13)	15 15° (<16)			
						27 2700K	20 20° (<10)	20 20° (<13)			
						30 3000K	25 25° (<10)	25 25° (<13)			
						35 3500K	40 40° (<10)	40 40° (<13)			
						40 4000K	60 60° (<16)	60 60° (<13)			
							SEE PAGE 3 FOR UGR RATINGS	SEE PAGE 3 FOR UGR RATINGS			



SPECIFICATION NOTES




- Wall Sconce (ex.) CW2-DF2-WHBK-90S23A2-30-LVS-40
- Wall Sconce (ex.) SW2-UD2-WHBK-80S11A2-33-LVS-49

WALL SCONCE LVS

APPLICATION NOTES

- Lucifer Lighting will not supply a fixture with a POE node or power supply inside the fixture. This allows for easier site install with nodes of 2 or more outputs.
- Consult node manufacturer for maximum remote wiring distances.
- Fixture features 18 Gauge wiring.
- Wiring connections are made on the fixture using customer supplied connectors, ex. wire nuts, push-in connectors, or terminal blocks.
- Confirm node compatibility with factory if it is not listed.
- Customers are responsible for ensuring POE node drive current is set to correct values shown below.
- Customers must ensure voltage range of the proposed POE node encompasses the fixtures complete Vf range, both maximum and minimum. If assistance is required contact LLC rep or factory.

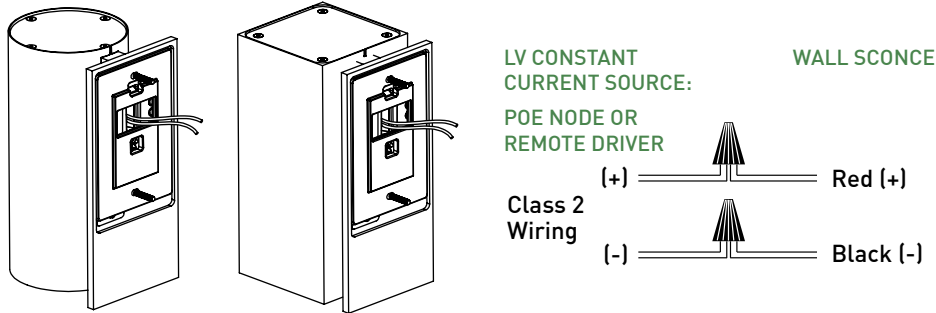
NODE COMPATIBILITY

Manufacturer	Model Number
 Igor® Enabling Smart Buildings™	NP50-60-C-F-5
 molex	180996-5107 180996-5101 180996-5102
 PLATFORMATICS	1 Channel Node, POE-LN2-1U-E 2 Channel Node, POE-LN2-2U-E 4 Channel Node, POE-LN2-4U-E

DRIVE CURRENT SPECIFICS

	80S			90S			97S			90W
	11A	17A	23A	11A	17A	23A	11A	17A	23A	18A
Minimum Vf	30.5	30.5	30.5	30.5	30.5	30.5	30.5	30.5	30.5	30.5
Maximum Vf	39	39	39	39	39	39	39	39	39	39
Current mA	250	400	500	250	400	500	250	400	500	400
Wattage W	8.2	13.6	17.4	8.2	13.6	17.4	8.2	13.6	17.4	13.6

WIRING DIAGRAM



WALL SCONCE LVS

ACCESSORIES

CYLINDER ALTERNATE BAFFLE AND MEDIA

Includes baffle with sealed lens.
Must specify baffle finish.

RBA-CY2--CGL** Clear Glass Lens*

*(Not available for Warm Dim)

RBA-CY2--SFL** Soft Focus Lens

RBA-CY2--FGL** Frosted Glass Lens

RBA-CY2--FSFL** Frosted Soft Focus Lens

RBA-CY2--FSL** Frosted Linear Spread Lens

** Baffle finish: Specify **WH** for white, **BK** for black, **AG** for satin silver, **AB** for architectural bronze, **AU** for cashmere gold, or **BB** for burnt bronze.

SQUILINDER ALTERNATE BAFFLE AND MEDIA

Includes baffle with sealed lens.
Must specify baffle finish.

RBA-SQ2--CGL-2** Clear Glass Lens*

*(Not available for Warm Dim)

RBA-SQ2--SFL-2** Soft Focus Lens

RBA-SQ2--FGL-2** Frosted Glass Lens

RBA-SQ2--FSFL-2** Frosted Soft Focus Lens

** Baffle finish: Specify **WH** for white, **BK** for black, **AG** for satin silver, **AB** for architectural bronze, **AU** for cashmere gold, or **BB** for burnt bronze.

LOWER REPLACEMENT OPTIC

Static White

RO-70-15-S 15° optic

RO-70-20-S 20° optic

RO-70-25-S 25° optic

RO-70-40-S 40° optic

RO-70-60-S 60° optic

Warm Dim

RO-70-20-W 20° optic

RO-70-25-W 25° optic

RO-70-40-W 40° optic

RO-70-60-W 60° optic

UPPER REPLACEMENT OPTIC

Static White

RO-50-15-S 15° optic

RO-50-20-S 20° optic

RO-50-25-S 25° optic

RO-50-40-S 40° optic

RO-50-60-S 60° optic

REPLACEMENT SUCTION TOOL

Included with each order (1 per 10 fixtures).

CY-SQ-TOOL-SUCTION Baffle assembly removal tool

WALL SCONCE LVS

STATIC WHITE PERFORMANCE - 3000K - SOFT FOCUS LENS

LUMEN PACKAGE	WATTAGE	15° OPTIC		20° OPTIC		25° OPTIC		40° OPTIC		60° OPTIC	
		DELIVERED	LPW	DELIVERED	LPW	DELIVERED	LPW	DELIVERED	LPW	DELIVERED	LPW
DOWNLIGHT											
80S11A	11	1170	106	1232	112	1242	113	1194	109	113	103
80S17A	17	1790	105	1893	111	1895	111	1814	107	1722	101
80S23A	23	2351	102	2470	107	2463	107	2366	103	2230	97
90S11A	11	1005	91	1058	96	1067	97	1026	93	973	88
90S17A	17	1538	90	1626	96	1628	96	1558	92	1479	87
90S23A	23	2020	88	2122	92	2116	92	2033	88	1916	83
97S11A	11	882	80	929	84	937	85	901	82	854	78
97S17A	17	1350	79	1428	84	1429	84	1368	80	1299	76
97S23A	23	1774	77	1863	81	1858	81	1785	78	1682	73
90W18A (WL 27K-18K)	18	-	-	1099	61	1104	61	1074	60	1021	57
90W18A (WL 30K-18K)	18	-	-	1113	62	1107	62	1077	60	1028	57
UPLIGHT											
80S11A*	11	1187	108	1271	116	1262	115	1193	108	1296	118
90S11A*	11	1020	93	1092	99	1084	99	1025	93	113	101
97S11A*	11	896	81	959	87	952	87	900	82	977	89

***NOTE:** To determine total performance for up / downlight (UD) fixture, add Dlv'd. Lumens of Up and Down configurations and divide by total system wattage (22W = 11W Up + 11W Down).

UNIFIED GLARE RATING DOWNLIGHT

10° OPTIC NO LENS	15° OPTIC SOFT FOCUS LENS	20° OPTIC SOFT FOCUS LENS	25° OPTIC SOFT FOCUS LENS	40° OPTIC SOFT FOCUS LENS	60° OPTIC SOFT FOCUS LENS
>19	<13	<10	<10	<10	<16

UNIFIED GLARE RATING UPLIGHT

15° OPTIC SOFT FOCUS LENS	20° OPTIC SOFT FOCUS LENS	25° OPTIC SOFT FOCUS LENS	40° OPTIC SOFT FOCUS LENS	60° OPTIC SOFT FOCUS LENS
<16	<13	<13	<13	<13

OUTPUT MULTIPLIER

CCT	CCT SCALE
2700K	0.97
3000K	1.00
3500K	1.03
4000K	1.08

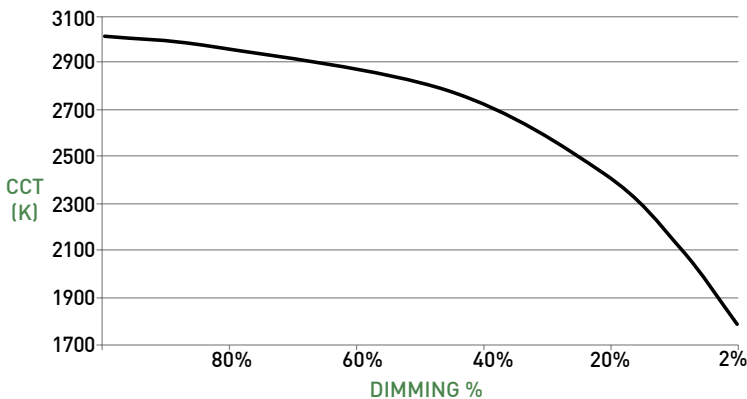
MEDIA LIGHT LOSS MULTIPLIER

MEDIA	LIGHT LOSS FACTOR
No Lens	1.05
CGL	1.00
SFL	1.00
FGL	0.89
FSFL	0.87
FLSL	0.82

WARM DIM PERFORMANCE - SOFT FOCUS LENS - 20° OPTIC

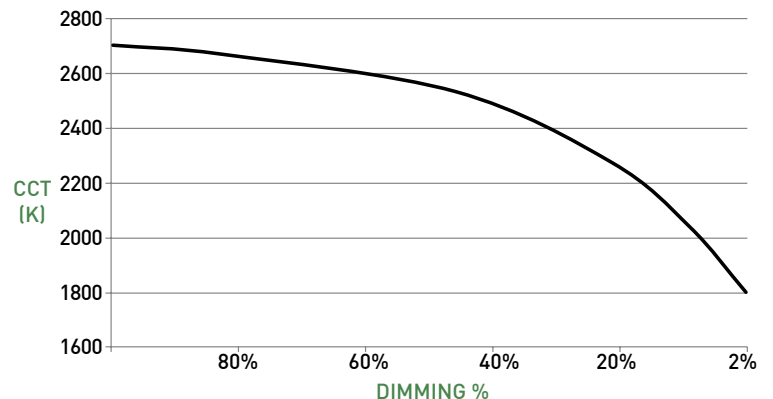
STANDARD WARM DIM PROFILE

90W12A 3000K - 1800K	Full on 100%	Dimmed to 80%	Dimmed to 70%	Dimmed to 50%	Dimmed to 20%	Dimmed to 10%	Dimmed to 2%
CCT (K)	3000	2950	2920	2775	2375	2000	1800
Light Output (Lm)	1113	890	779	556	222	111	22
Power (W)	18	14	13	9	4	2	0.3
Efficacy (LPW)	62	62	62	62	62	62	62



INCANDESCENT DIMMING PROFILE

90W11A 2700K - 1800K	Full on 100%	Dimmed to 80%	Dimmed to 70%	Dimmed to 50%	Dimmed to 20%	Dimmed to 10%	Dimmed to 2%
CCT (K)	2700	2650	2620	2520	2180	1950	1800
Light Output (Lm)	1099	879	769	549	219	109	22
Power (W)	18	14	13	9	4	2	0.3
Efficacy (LPW)	61	61	61	61	61	61	61

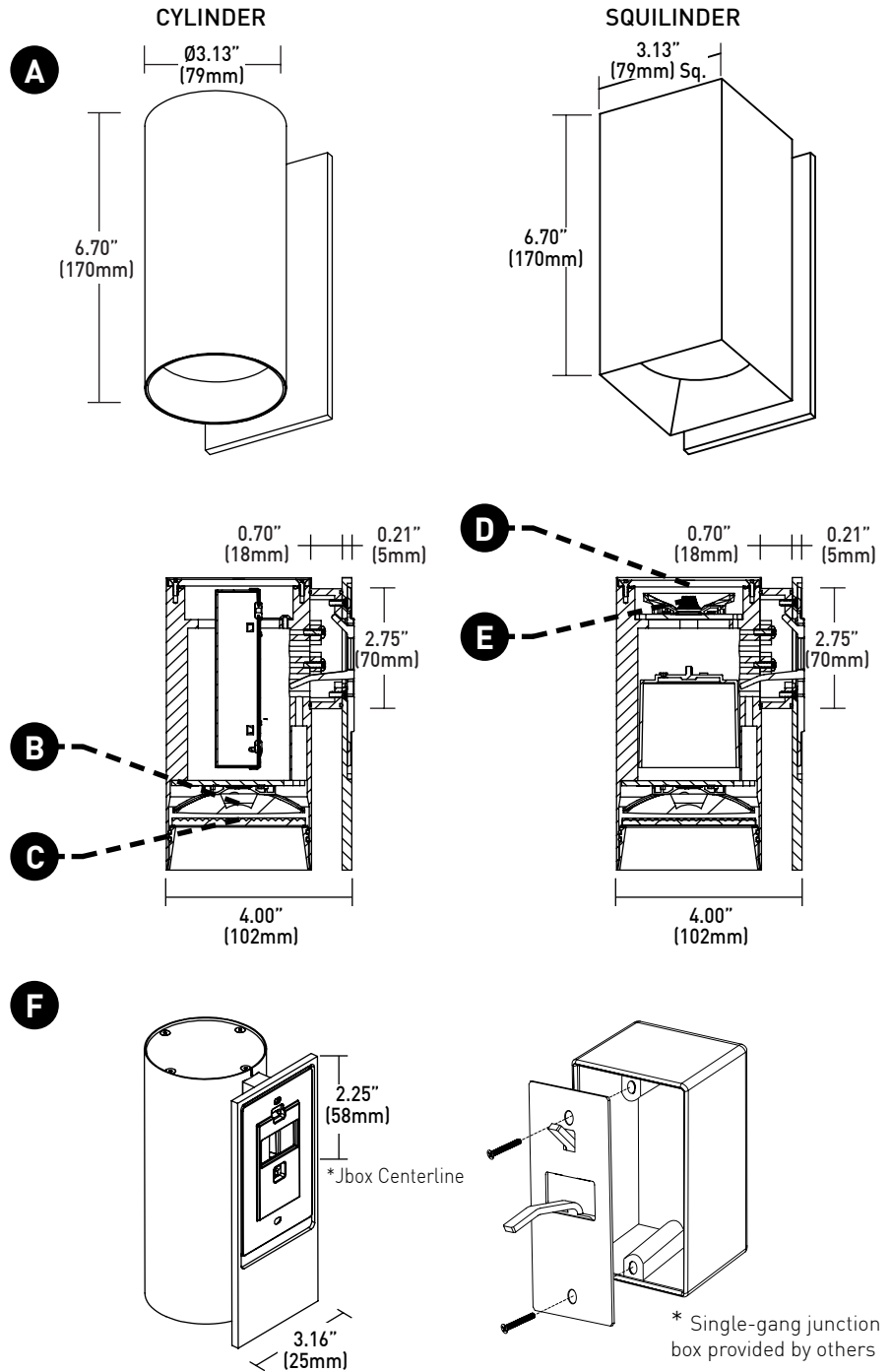


WALL SCONCE LVS

CYLINDER

- A LUMINAIRE**
Machined aluminum body with integrated heat sink and LED; power supply may be integral or remote mount.
- B LOWER OPTIC**
Robust light engine with optimized optic pairing integrates Reflection, refraction, TIR offering 15°, 20°, 25°, 40° & 60° beams.
- C LOWER MEDIA**
Cylinder baffle lens assembly can accept 1 lens sealed in place. Soft focus lens included as standard for lens. Suction tool provided for removal of baffle lens assembly.
- D UPPER MEDIA**
Cylinder assembly can accept 1 lens sealed in place. Diffusion lens included as standard for lens.
- E UPPER OPTIC**
Robust light engine with optimized optic pairing integrates Reflection, refraction, TIR offering 15°, 20°, 25°, 40° & 60° beams.

DIMENSIONS / DRAWINGS



MOUNTING

- F MOUNTING PLATE**
Mounting plate (concealed) with factory supplied hidden screws after wall is fully finished. Single-gang junction box required for mounting. Fixture to mount flush with minimalist transition to wall.

WALL SCONCE LVS

TECHNICAL

CONSTRUCTION

Cylinder / Squilinder: Machined aluminum body; extruded aluminum internal heat-sink; painted finishes are granulated powder coat.

STATIC WHITE LED

2-step MacAdam ellipse LED module available in 80+, 90+ and 97+ CRI configurations in color temperatures of, 2700K, 3000K, 3500K and 4000K. 3-step MacAdam ellipse LED module available in 90+ CRI configuration in color temperature of 2400K, Average rated lamp life: 50,000 hours. LED and driver assemblies are field-replaceable.

WARM DIM LED

Proprietary 3-step MacAdam ellipse warm dim LED module available in 90+ CRI configuration. 3000K or 2700K at full brightness, warming to 1800K at full dim. Average rated lamp life of 50,000 hours. LED and driver assemblies are field-replaceable.

MOUNTING

Cylinder is supplied with a mounting adaptor plate providing a minimalist transition accommodating wall thicknesses of 0.44" (7/16", 12mm) to 0.75" (3/4", 19mm).

OPERATING TEMPERATURE

Down Light: 104°F (40°C).

LISTING

cTUVus listed to UL1598 standard for Dry / Damp and Wet (IP65) locations. Title 24 JA8-2022 Listed. NEMA 410 compliant.

FIXTURE

Fixture - 2 lbs

Remote Driver - 1.4 lbs

LIMITED WARRANTY

Manufacturer's 1-year warranty guarantees product(s) listed to be free from defects in material and workmanship under normal use and service. 5-year warranty on LED to operate with 70% of the original flux and remain within a range of 3 duv. Warranty period begins from the date of shipment by Seller. [Consult website for full warranty terms and conditions.](#)

CHANGE LOG

- 1.01/12/2021: ADDED 2200K, 2700K-1800K WARM DIM OFFERINGS.
- 2.10/17/2022: REMOVED 90W13A 3200K-1800K WARM DIM AND ADDED 90W12A 3000K-1800K WARM DIM.
- 3.08/01/2023: UPDATED ALL LED AND OPTIC OFFERINGS. REMOVED 2200K OFFERING
- 4.02/07/2024: ADDED 2400K OFFERING.