

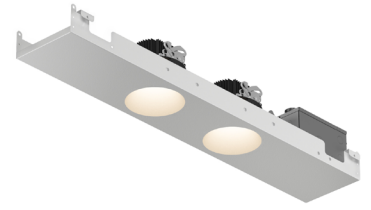
PANELUX™ FRAXION® 4

The Panelux™ lighting system provides solutions to aesthetic problems of other industry products.

The Panelux™ lighting system is a patent pending innovative solution integrating recessed downlights into metal ceiling panels designed for use with T-Grid systems like Armstrong Techzone®, USG Logix™, and HunterDouglas®*.

SHIPPING MAY 2025

PROJECT NAME:	TYPE:
---------------	-------



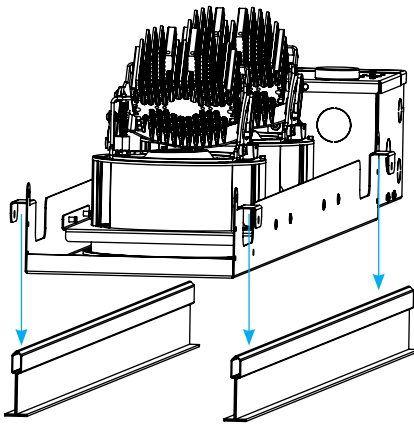
OPTIONALITY

- Configurable dimensions, with panel lengths from 12" - 60" and panel width in 6".
- Available in single, dual, triple and quadruple fixtures with round or square trimless downlights in any combination of fixed / adjustable / wallwasher.
- Choose your on center spacing and controls grouping.
- UGR as low as 1.

INSTALLER FRIENDLY

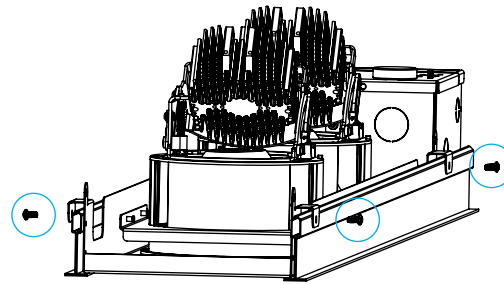
5 minute install process requires one trade professional. Pre-assembled product ships complete. Reduced install time by at least 50% compared to other industry leading panel downlights.

STEP 1



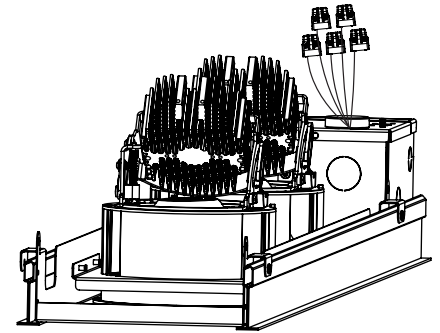
PLACE PANEL IN T-GRID
(SUPPLIED BY OTHERS)

STEP 2



SECURE WITH SCREWS
(SUPPLIED BY OTHERS)

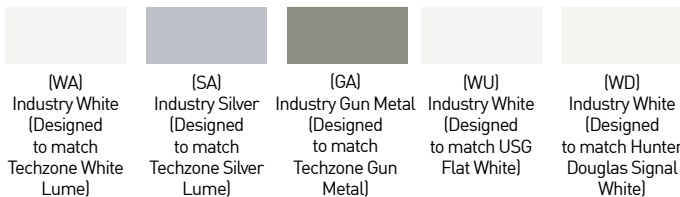
STEP 3



MAKE WIRING CONNECTIONS

AVAILABLE FINISHES

INDUSTRY MATCHING POWDERCOAT



LUCIFER LIGHTING STANDARD POWDERCOAT



* Techzone is a registered trademark of AWI Licensing LLC, Logix is a trademark of USG Corporation, HunterDouglas is a registered trademark of Hunter Douglas Corporation. Lucifer Lighting has no association with Armstrong or AWI Licensing, USG Corporation, or Hunter Douglas Corporation.

PANELUX™ FRAXION® 4

PROJECT NAME:	TYPE:
---------------	-------

ORDERING INFORMATION - PANEL

COMPLETE SPECIFICATION	PANEL (REQUIRED)	LED / DRIVER (REQUIRED)	ZONE 1 (REQUIRED)	ZONE 2 (AS NEEDED)
------------------------	------------------	-------------------------	-------------------	--------------------

SPECIFICATION INSTRUCTIONS:

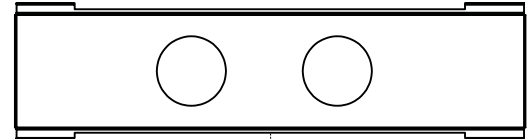
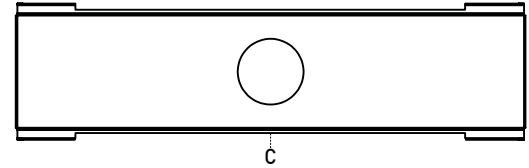
- Specify one or two control zones, all fixtures on each control zone are the same type.
- All fixtures are specified with the same baffle finish.

REQUIRED

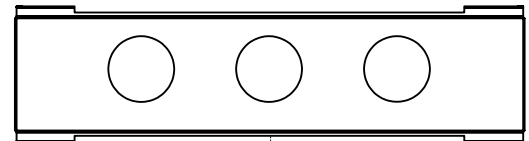
PANEL	FIXTURE SHAPE	PANEL WIDTH (INCHES)	PANEL FINISH	PANEL LENGTH (INCHES)	BAFFLE FINISH	FIXTURE COUNT	FIXTURE LAYOUT / CONTROL ZONES	ON CENTER SPACING (INCHES)
P		6						
PANEL	P Panel	F4R Round F4S Square F4T Square Transitional	INDUSTRY MATCHING POWDERCOATS	SINGLE	POWDERCOAT		① = ZONE 1 ② = ZONE 2	SINGLE
	WA Industry White (Designed to match Techzone White Lume)	WH White	18	1 Single	A	00		
	AG Satin Silver	AB Architectural Bronze	24	2 Dual	B	08		
	SA Industry Silver (Designed to match Techzone Silver Lume)	AG Satin Silver	30	3 Triple	C	10		
	GA Industry Gun Metal (Designed to match Techzone Gun Metal)	AU Cashmere Gold	36	4 Quad	D	12		
	WU Industry White (Designed to match USG Flat White)	BB Burnt Bronze	42		E	16		
	WD Industry White (Designed to match Hunter Douglas Signal White)	BK Black	48		F	18		
	CF Custom Finish / Other Industry Finish* *(Consult Factory)	PR Primer	60		G	24		
		CF Custom Finish* *(Consult Factory)		DUAL	H	08		
		INDUSTRY MATCHING POWDERCOATS			I	10		
		WA Industry White			J	12		
		SA Industry Silver			K	16		
		GA Industry Gun Metal			L	18		
		WU Industry White			M	24		
		WD Industry White		TRIPLE		08		
		CF Other Industry Finish* *(Consult Factory)				10		
						12		
				QUAD		16		
						18		
						24		

FIXTURE SPACING GUIDE

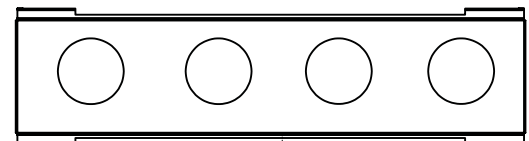
FIXTURE COUNT	LENGTH (INCHES)	ON CENTER SPACING (INCHES)					
		08	10	12	16	18	24
SINGLE	ALL	CENTERED IN PANEL					
DUAL	30	✓	-	-	-	-	-
	36	✓	✓	✓	-	-	-
	42	✓	✓	✓	✓	✓	-
	48	✓	✓	✓	✓	✓	✓
TRIPLE	36	✓	-	-	-	-	-
	42	✓	✓	-	-	-	-
	48	✓	✓	✓	-	-	-
	60	✓	✓	✓	✓	✓	-
QUAD	48	✓	-	-	-	-	-
	60	✓	✓	✓	-	-	-



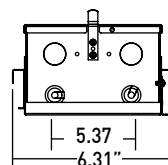
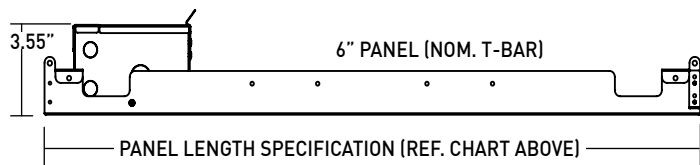
ON CENTER SPACING SPECIFICATION



ON CENTER SPACING SPECIFICATION



ON CENTER SPACING SPECIFICATION



PROJECT NAME:	TYPE:
---------------	-------

ORDERING INFORMATION - LED / DRIVER

	PANEL (REQUIRED)	LED / DRIVER (REQUIRED)	ZONE 1 (REQUIRED)	ZONE 2 (AS NEEDED)
COMPLETE SPECIFICATION				



SPECIFICATION INSTRUCTIONS:

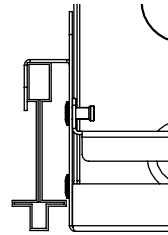
- All fixtures on Zone 1 and Zone 2 must be specified with the same CRI and CCT.
- All fixtures specified on each zone are controlled together.
- Zones 1 and 2 can be controlled together or independently. Separate switch legs are required for independent control.

SPECIFICATION REQUIRED

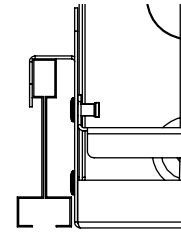
	CRI	CCT	DRIVER (120V-277V)
LED DRIVER	STATICWHITE		
	1 80+ CRI (80S)	A 2400K (24)*	A eldoLED ECOdrive, 0-10V LOG, 1% (SG3)* *16W MAX PER FIXTURE HEAD
	2 90+ CRI (90S)	B 2700K (27)	B eldoLED ECOdrive, 0-10V LIN, 1% (SN3)* *16W MAX PER FIXTURE HEAD
	3 97+ CRI (97S)	C 3000K (30)	C eldoLED SOLDrive, 0-10V LOG, 0.1% (EG1)
		E 3500K (35)	D eldoLED SOLDrive, 0-10V LIN, 0.1% (EN1)
		F 4000K (40)	E eldoLED SOLDrive, DALI-2 DT6, 0.1% (ED1)
			F Lutron, Hi-Lume Premier Ecosystem Fade to Black, 0.1% (LP1)
			G Athena Control eldoLED SOLDrive, 0.1% (AS1)
			H Casambi Control eldoLED SOLDrive, 0.1% (CS1)
			TUNABLEWHITE ONLY
			I eldoLED, DUALdrive, 0-10V LOG, 0.1% (DG1)
			J eldoLED, DUALdrive, DALI-2 DT8, 0.1% (DD2)
		K Athena Control eldoLED SOLDrive, 0.1% (AD1)	
		L Casambi Control eldoLED SOLDrive, 0.1% (CD1)	

PANEL MOUNTING DETAILS

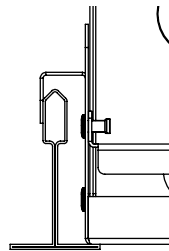
9/16" T-GRID
TEGULAR



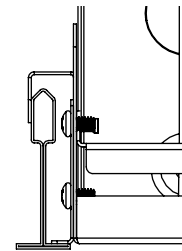
9/16" T-GRID
BOLT SLOT



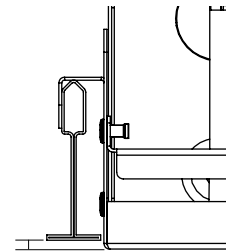
15/16" T-GRID



9/16" T-GRID*



9/16" T-GRID
TEGULAR



0.09"

* 9/16" T-grid requires accessory part number PANEL-BRACKET.

PROJECT NAME:	TYPE:
---------------	-------

ORDERING INFORMATION - ZONE 1

COMPLETE SPECIFICATION	PANEL (REQUIRED)	LED / DRIVER (REQUIRED)	ZONE 1 (REQUIRED)	ZONE 2 (AS NEEDED)
------------------------	------------------	-------------------------	-------------------	--------------------

SPECIFICATION INSTRUCTIONS:

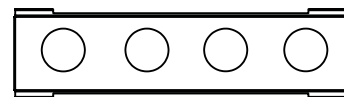
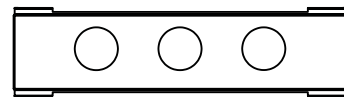
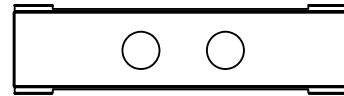
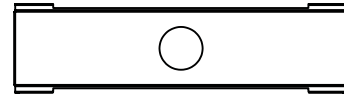
- Zone 1 specification required, reference layout/ control zones specification from page 2.
- All fixtures on Zone 1 will carry the same specification.
- Specify Zone 2 fixtures on page 5.

ZONE 1 - REQUIRED

TRIM TYPE	LED WATTAGE	OPTIC	MEDIA	
Z O N E 1	AS Adjustable Shallow Regress	N 15W 10° Static White, 638lm (15C)	N 10° (10)	
	FS Fixed Shallow Regress	F 11W Static White, 1351lm (11A)	1 15° (15)* *NOT AVAILABLE WITH WARM DIM	
	WW Wallwash	L 15W Static White, 1681lm (15A)	2 20° (20)	
		T 21W Static White, 2271lm (21A)	3 25° (25)	
	V 30W Static White, 3059lm (30B)* *ONLY AVAILABLE WITH FIXTURE LAYOUTS A AND C	4 40° (40)	4 Soft Focus Lens (04)* *REQUIRED FOR N(10°) OPTIC	
	O 15W Warm Dim (15A) WL 2700K - 1800K: 1022lm WD 3000K - 1800K: 1023lm	6 60° (60)	W Wallwash Lens (WW)* *REQUIRED AND ONLY AVAILABLE WITH WALLWASH	
	P 15W Tunable White (15B) TR 4000K - 1800K: 1247lm TH 5000K - 2700K: 1236lm	8 85° (85)* *REQUIRES FOR 7 WIDE DISTRIBUTION LENS	ALTERNATE MEDIA	
	U 22W Tunable White (22B) TR 4000K - 1800K: 1710lm TH 5000K - 2700K: 1695lm	W Wallwash (WW)	1 Honeycomb Louver (01)* *NOT AVAILABLE WITH ADJUSTABLE FIXTURES OR WARM DIM	
	AD Adjustable Deep Regress	N 15W 10° Static White, 540lm (15C)	N 10° (10)	2 Clear Glass Lens (02)* *NOT AVAILABLE WITH WARM DIM
	FD Fixed Deep Regress	F 11W Static White, 1209lm (11A)	1 15° (15)* *NOT AVAILABLE WITH WARM DIM	3 Frosted Glass Lens (03)
L 15W Static White, 1610lm (15A)	2 20° (20)	5 Frosted Soft Focus Lens (05)		
T 21W Static White, 2175lm (21A)	3 25° (25)	6 Frosted Linear Spread Lens (06)		
V 30W Static White, 2950lm (30B)* *ONLY AVAILABLE WITH FIXTURE LAYOUTS A AND C	4 40° (40)	7 Wide Distribution Lens (07)* *REQUIRED AND ONLY AVAILABLE WITH 8 (85°) OPTIC		
O 15W Warm Dim (15A) WL 2700K - 1800K: 1022lm WD 3000K - 1800K: 1031lm	6 60° (60)	H Adjustable Honeycomb Louver and Soft Focus Lens (H5)* *NOT AVAILABLE WITH FIXED FIXTURES. 15W MAX		
P 15W Tunable White (15B) TR 4000K - 1800K: 1209lm TH 5000K - 2700K: 1198lm	8 85° (85)* *REQUIRES FOR 7 WIDE DISTRIBUTION LENS	N No Lens (NL)* *NOT AVAILABLE WITH WARM DIM		
U 22W Tunable White (22B) TR 4000K - 1800K: 1696lm TH 5000K - 2700K: 1680lm	PERFORMANCE REFLECT 80-CRI / 3000K PAIRED WITH 25° OPTIC			

REF. ONLY FROM P. 2

FIXTURE LAYOUT / CONTROL ZONES
① = ZONE 1 ② = ZONE 2
A ①
B ① ①
C ① ②
D ① ① ①
E ① ① ②
F ① ② ②
G ① ② ①
H ② ① ②
I ① ① ① ①
J ① ① ② ②
K ① ② ① ②
L ① ② ② ①
M ② ① ① ②

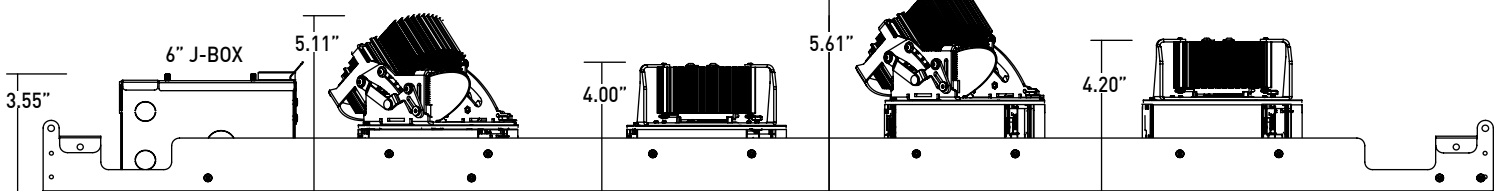


ADJUSTABLE SHALLOW REGRESS

FIXED / WALLWASH SHALLOW REGRESS

ADJUSTABLE DEEP REGRESS

FIXED DEEP REGRESS



PANELUX™ FRAXION® 4

PROJECT NAME:	TYPE:
---------------	-------

ORDERING INFORMATION - ZONE 2

	PANEL (REQUIRED)	LED / DRIVER (REQUIRED)	ZONE 1 (REQUIRED)	ZONE 2 (AS NEEDED)
COMPLETE SPECIFICATION				

SPECIFICATION INSTRUCTIONS:

- Specify Zone 2 as needed based upon fixture layout/ control zones specification from page 2.
- Zone 2 fixtures will carry the same fixture shape specification as Zone 1.
- All fixtures on Zone 2 will carry the same specification.

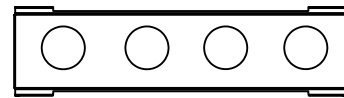
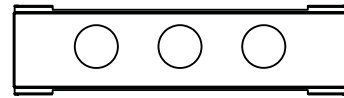
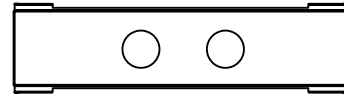
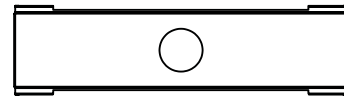
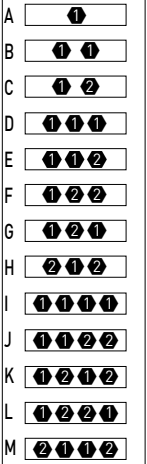
REF. ONLY
FROM P. 2

ZONE 2 - AS NEEDED

	TRIM TYPE	LED WATTAGE	OPTIC	MEDIA	
Z O N E	AS Adjustable Shallow Regress	N 15W 10° Static White, 638lm (15C)	N 10° (10)	STANDARD MEDIA 4 Soft Focus Lens (04)* <small>*REQUIRED FOR N(10°) OPTIC</small> W Wallwash Lens (WW)* <small>*REQUIRED AND ONLY AVAILABLE WITH WALLWASH</small> ALTERNATE MEDIA 1 Honeycomb Louver (01)* <small>*NOT AVAILABLE WITH ADJUSTABLE FIXTURES OR WARM DIM</small> 2 Clear Glass Lens (02)* <small>*NOT AVAILABLE WITH WARM DIM</small> 3 Frosted Glass Lens (03) 5 Frosted Soft Focus Lens (05) 6 Frosted Linear Spread Lens (06) 7 Wide Distribution Lens (07)* <small>*REQUIRED AND ONLY AVAILABLE WITH 8 (85°) OPTIC</small> H Adjustable Honeycomb Louver and Soft Focus Lens (HS)* <small>*NOT AVAILABLE WITH FIXED FIXTURES. 15W MAX</small> N No Lens (NL)* <small>*NOT AVAILABLE WITH WARM DIM</small>	
	FS Fixed Shallow Regress	F 11W Static White, 1351lm (11A)	1 15° (15)* <small>*NOT AVAILABLE WITH WARM DIM</small>		
	WW Wallwash	L 15W Static White, 1681lm (15A)	2 20° (20)		
		T 21W Static White, 2271lm (21A)	3 25° (25)		
	V 30W Static White, 3059lm (30B)* <small>*ONLY AVAILABLE WITH FIXTURE LAYOUTS A AND C</small>	4 40° (40)			
	O 15W Warm Dim (15A) WL 2700K - 1800K: 1022lm WD 3000K - 1800K: 1023lm	6 60° (60)			
	P 15W Tunable White (15B) TR 4000K - 1800K: 1247lm TH 5000K - 2700K: 1236lm	8 85° (85)* <small>*REQUIRES FOR 7 WIDE DISTRIBUTION LENS</small>			
	U 22W Tunable White (22B) TR 4000K - 1800K: 1710lm TH 5000K - 2700K: 1695lm	W Wallwash (WW) PERFORMANCE REFLECT 80-CRI / 3000K PAIRED WITH 25° OPTIC			
	2	AD Adjustable Deep Regress	N 15W 10° Static White, 540lm (15C)		N 10° (10)
		FD Fixed Deep Regress	F 11W Static White, 1209lm (11A)		1 15° (15)* <small>*NOT AVAILABLE WITH WARM DIM</small>
L 15W Static White, 1610lm (15A)			2 20° (20)		
T 21W Static White, 2175lm (21A)		3 25° (25)			
V 30W Static White, 2950lm (30B)* <small>*ONLY AVAILABLE WITH FIXTURE LAYOUTS A AND C</small>		4 40° (40)			
O 15W Warm Dim (15A) WL 2700K - 1800K: 1022lm WD 3000K - 1800K: 1031lm		6 60° (60)			
P 15W Tunable White (15B) TR 4000K - 1800K: 1209lm TH 5000K - 2700K: 1198lm		8 85° (85)* <small>*REQUIRES FOR 7 WIDE DISTRIBUTION LENS</small>			
U 22W Tunable White (22B) TR 4000K - 1800K: 1678lm TH 5000K - 2700K: 1680lm		PERFORMANCE REFLECT 80-CRI / 3000K PAIRED WITH 60° OPTIC			

FIXTURE LAYOUT / CONTROL ZONES

- 1 = ZONE 1
- 2 = ZONE 2

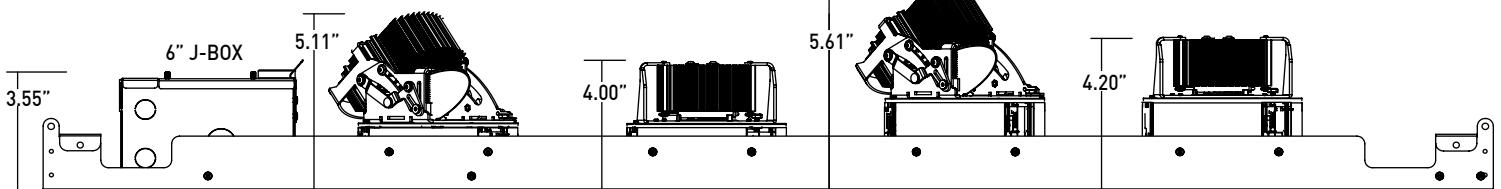


ADJUSTABLE SHALLOW REGRESS

FIXED / WALLWASH SHALLOW REGRESS

ADJUSTABLE DEEP REGRESS

FIXED DEEP REGRESS



PROJECT NAME:	TYPE:
---------------	-------

ACCESSORIES

ROUND / SQUARE TRANSITIONAL SHALLOW MEDIA

- HCL-F4RS** Honeycomb Louver*
*(NOT AVAILABLE WITH ADJUSTABLE FIXTURE OR WARM DIM)
- CGL-F4RS** Clear Glass Lens*
*(NOT AVAILABLE WITH WARM DIM)
- FGL-F4RS** Frosted Glass Lens
- SFL-F4RS** Soft Focus Lens
- FSFL-F4RS** Frosted Soft Focus Lens
- WDL-F4RS** Wide Distribution Lens*
*(REQUIRED AND ONLY AVAILABLE WITH 8 (85°) OPTIC)
- FLSL-F4RS** Frosted Linear Spread Lens

ROUND / SQUARE TRANSITIONAL DEEP MEDIA

- HCL-F4RD** Honeycomb Louver*
*(NOT AVAILABLE WITH ADJUSTABLE FIXTURE OR WARM DIM)
- CGL-F4RD** Clear Glass Lens*
*(NOT AVAILABLE WITH WARM DIM)
- FGL-F4RD** Frosted Glass Lens
- SFL-F4RD** Soft Focus Lens
- FSFL-F4RD** Frosted Soft Focus Lens
- WDL-F4RD** Wide Distribution Lens*
*(REQUIRED AND ONLY AVAILABLE WITH 8 (85°) OPTIC)
- FLSL-F4RD** Frosted Linear Spread Lens

REPLACEMENT BAFFLE ASSEMBLY (INCLUDES MEDIA)

ASSEMBLY	SHAPE	RATING	FINISH	MEDIA
RBA		1		
REPLACEMENT BAFFLE ASSEMBLY	F4RS Round Shallow Regress F4RW Round Wallwash F4SS Square Shallow Regress F4SW Square Wallwash F4TS Square Transitional Shallow Regress F4RD Round Deep Regress F4SD Square Deep Regress F4TD Square Transitional Deep Regress	1 IP20 Dry/Damp	WH White AB Architectural Bronze AG Satin Silver AU Cashmere Gold BB Burnt Bronze BK Black PR Primer CF Custom Finish* <small>*(CONSULT FACTORY)</small>	LEAVE BLANK FOR SOFT FOCUS LENS (SFL) HCL Honeycomb Louver* <small>*(NOT AVAILABLE WITH ADJUSTABLE FIXTURES OR WARM DIM)</small> CGL Clear Glass Lens* <small>*(NOT AVAILABLE WITH WARM DIM)</small> FGL Frosted Glass Lens FSFL Frosted Soft Focus Lens FLSL Frosted Linear Spread Lens WDL Wide Distribution Lens* <small>*(REQUIRED AND ONLY AVAILABLE WITH 8 (85°) OPTIC)</small> NL No Lens* <small>*(NOT AVAILABLE WITH WARM DIM)</small>

SQUARE SHALLOW MEDIA

- HCL-F4SS** Honeycomb Louver*
*(NOT AVAILABLE WITH ADJUSTABLE FIXTURE OR WARM DIM)
- CGL-F4SS** Clear Glass Lens*
*(NOT AVAILABLE WITH WARM DIM)
- FGL-F4SS** Frosted Glass Lens
- SFL-F4SS** Soft Focus Lens
- FSFL-F4SS** Frosted Soft Focus Lens
- WDL-F4SS** Wide Distribution Lens*
*(REQUIRED AND ONLY AVAILABLE WITH 8 (85°) OPTIC)
- FLSL-F4SS** Frosted Linear Spread Lens

SQUARE DEEP MEDIA

- HCL-F4SD** Honeycomb Louver*
*(NOT AVAILABLE WITH ADJUSTABLE FIXTURE OR WARM DIM)
- CGL-F4SD** Clear Glass Lens*
*(NOT AVAILABLE WITH WARM DIM)
- FGL-F4SD** Frosted Glass Lens
- SFL-F4SD** Soft Focus Lens
- FSFL-F4SD** Frosted Soft Focus Lens
- WDL-F4SD** Wide Distribution Lens*
*(REQUIRED AND ONLY AVAILABLE WITH 8 (85°) OPTIC)
- FLSL-F4SD** Frosted Linear Spread Lens

ADJUSTABLE SHALLOW HCL ASSEMBLY

- OLR-F4RS1-SFL-HCL**
Adjustable Honeycomb Louver and Soft Focus Lens*
*(NOT AVAILABLE WITH FIXED FIXTURES, 15W MAX)

ADJUSTABLE DEEP HCL ASSEMBLY

- OLR-F4RD1-SFL-HCL**
Adjustable Honeycomb Louver and Soft Focus Lens*
*(NOT AVAILABLE WITH FIXED FIXTURES, 15W MAX)

9/16" T-GRID ACCESSORY

- Required for 9/16" T-Grid installation
- PANEL-BRACKET**

SHALLOW REGRESS / WALLWASH REPLACEMENT OPTICS

Interchangeable optics accessible through fixture aperture.

STATIC WHITE

- RO-70-15-S** 15° optic
- RO-70-20-S** 20° optic
- RO-70-25-S** 25° optic
- RO-70-40-S** 40° optic
- RO-70-60-S** 60° optic
- RO-70-WW-S** Wallwash optic

WARM DIM

- RO-70-20-W** 20° optic
- RO-70-25-W** 25° optic
- RO-70-40-W** 40° optic
- RO-70-60-W** 60° optic
- RO-70-WW-W** Wallwash optic

TUNABLE WHITE

- RO-70-15-T** 15° optic
- RO-70-20-T** 20° optic
- RO-70-25-T** 25° optic
- RO-70-40-T** 40° optic
- RO-70-WW-T** Wallwash optic

DEEP REGRESS REPLACEMENT OPTICS

Interchangeable optics accessible through fixture aperture.

STATIC WHITE

- RO-50-15-S** 15° optic
- RO-50-20-S** 20° optic
- RO-50-25-S** 25° optic
- RO-50-40-S** 40° optic
- RO-50-60-S** 60° optic

WARM DIM

- RO-50-20-W** 20° optic
- RO-50-25-W** 25° optic
- RO-50-40-W** 40° optic
- RO-50-60-W** 60° optic

TUNABLE WHITE

- RO-50-15-T** 15° optic
- RO-50-20-T** 20° optic
- RO-50-25-T** 25° optic
- RO-50-40-T** 40° optic
- RO-50-60-T** 60° optic

PROJECT NAME:	TYPE:
---------------	-------

SHALLOW REGRESS PERFORMANCE - 3000K

PACKAGE	WATTS	10° OPTIC NO LENS		15° OPTIC SOFT FOCUS LENS		20° OPTIC SOFT FOCUS LENS		25° OPTIC SOFT FOCUS LENS		40° OPTIC SOFT FOCUS LENS		60° OPTIC SOFT FOCUS LENS		85° OPTIC WIDE DISTRIBUTION		WW OPTIC	
		DLVD.	LPW	DLVD.	LPW	DLVD.	LPW	DLVD.	LPW	DLVD.	LPW	DLVD.	LPW	DLVD.	LPW	DLVD.	LPW
80S11A	11	-	-	1194	109	1255	114	1351	123	1246	113	1122	102	961	87	868	79
80S15A	15	638	42	1609	107	1689	113	1681	112	1612	107	1495	100	1296	86	1126	65
80S21A	21	-	-	2228	106	2264	108	2271	108	2179	104	2020	96	1762	84	1275	61
80S30B	30	-	-	2928	97	3104	103	3059	101	2917	97	2739	91	2419	80	2086	70
90S11A	11	-	-	1026	93	1078	98	1161	106	1070	97	964	88	826	75	746	68
90S15A	15	550	36	1382	92	1451	97	1444	96	1385	92	1284	86	1113	74	967	64
90S21A	21	-	-	1914	91	1945	93	1951	93	1872	89	1735	83	1514	72	1095	52
90S30B	30	-	-	2515	84	2667	89	2628	88	2506	84	2353	78	2078	69	1792	60
97S11A	11	-	-	901	82	946	86	1019	93	939	85	846	77	725	66	655	60
97S15A	15	475	31	1213	81	1274	85	1268	85	1216	81	1127	75	977	65	849	57
97S21A	21	-	-	1680	80	1708	81	1713	82	1644	78	1523	73	1329	63	961	46
97S30B	30	-	-	2208	74	2342	78	2307	77	2200	73	2066	69	1824	61	1573	52
90W15A (WL 27K-18K)	15	-	-	-	-	1055	70	1022	68	1001	67	949	63	851	57	771	51
90W15A (WD 30K-18K)	15	-	-	-	-	1056	70	1023	68	1007	67	957	64	858	57	794	53
90T15B (40K-18K)	15	-	-	1203	80	1267	84	1247	83	1191	79	1122	75	969	65	890	59
90T15B (50K-27K)	15	-	-	1192	79	1256	84	1236	82	1180	79	1112	74	960	64	882	59
90T22B (40K-18K)	22	-	-	1664	76	1752	80	1710	78	1651	75	1574	72	1351	61	1241	56
90T22B (50K-27K)	22	-	-	1649	75	1736	79	1695	77	1636	74	1560	71	1339	61	1230	59

MAX UNIFIED GLARE RATING

10° OPTIC NO LENS	15° OPTIC SOFT FOCUS LENS	20° OPTIC SOFT FOCUS LENS	25° OPTIC SOFT FOCUS LENS	40° OPTIC SOFT FOCUS LENS	60° OPTIC SOFT FOCUS LENS	85° OPTIC WIDE DISTRIBUTION	WW OPTIC WALLWASH LENS
1-6	9-15	6-13	6-13	7-13	7-13	22-25	25-29

*UGR values reflect white baffle and vary based on wattage, lower UGR values available with different finishes.

OUTPUT MULTIPLIER

CCT	CCT SCALE
2400K	0.85
2700K	0.97
3000K	1.00
3500K	1.03
4000K	1.08

TUNABLE WHITE MULTIPLIER

CCT	5000K- 2700K	4000K- 1800K
5000K	1.16	-
4000K	1.08	1.14
3500K	1.04	1.07
3000K	1.00	1.00
2700K	0.96	0.92
2400K	-	0.84
1800K	-	0.69

MEDIA LIGHT LOSS FACTOR

MEDIA	LIGHT LOSS FACTOR
NO LENS	1.06
CGL	1.00
SFL	1.00
FGL	0.89
FSFL	0.81
FLSL	0.82
HCL	0.73

PANELUX™ FRAXION® 4

PROJECT NAME:	TYPE:
---------------	-------

DEEP REGRESS PERFORMANCE - 3000K

PACKAGE	WATTS	10° OPTIC NO LENS		15° OPTIC SOFT FOCUS LENS		20° OPTIC SOFT FOCUS LENS		25° OPTIC SOFT FOCUS LENS		40° OPTIC SOFT FOCUS LENS		60° OPTIC SOFT FOCUS LENS		85° OPTIC WIDE DISTRIBUTION	
		DLVD.	LPW	DLVD.	LPW	DLVD.	LPW	DLVD.	LPW	DLVD.	LPW	DLVD.	LPW	DLVD.	LPW
80S11A	11	-	-	999	91	1129	103	1189	108	1037	94	1209	110	992	90
80S15A	15	540	36	1346	90	1519	101	1478	99	1342	89	1610	107	1336	89
80S21A	21	-	-	1864	89	2036	97	1997	95	1814	86	2175	104	1818	87
80S30B	30	-	-	2449	82	2792	93	2690	90	2428	81	2950	98	2495	83
90S11A	11	-	-	858	78	970	88	1021	93	891	81	1038	94	852	77
90S15A	15	465	31	1156	77	1305	87	1270	85	1153	77	1383	92	1148	77
90S21A	21	-	-	1601	76	1749	83	1716	82	1558	74	1869	89	1562	74
90S30B	30	-	-	2104	70	2399	80	2311	77	2086	70	2534	84	2143	71
97S11A	11	-	-	754	69	851	77	897	82	72	71	912	83	748	68
97S15A	15	401	26	1015	68	1146	76	1115	74	1012	67	1214	81	1008	67
97S21A	21	-	-	146	67	1536	73	1507	72	1368	65	1641	78	1371	65
97S30B	30	-	-	1847	62	2106	70	2029	68	1832	61	2225	74	1882	63
90W15A (WL 27K-18K)	15	-	-	-	-	994	66	937	62	833	56	1022	68	878	59
90W15A (WD 30K-18K)	15	-	-	-	-	995	66	938	63	838	56	1031	69	885	59
90T15B (40K-18K)	15	-	-	1082	72	1140	76	1097	73	991	66	1209	81	999	67
90T15B (50K-27K)	15	-	-	1072	71	1130	75	1087	72	982	65	1198	80	990	66
90T22B (40K-18K)	22	-	-	1497	68	157+	72	1504	68	1374	62	1696	77	1394	63
90T22B (50K-27K)	22	-	-	1483	67	1561	71	1491	68	1362	62	1680	76	1381	63

*LIN-T0-LIN 0-10V pairing not compatible with Warm Dim or Tunable White.

MAX UNIFIED GLARE RATING

10° OPTIC NO LENS	15° OPTIC SOFT FOCUS LENS	20° OPTIC SOFT FOCUS LENS	25° OPTIC SOFT FOCUS LENS	40° OPTIC SOFT FOCUS LENS	60° OPTIC SOFT FOCUS LENS	85° OPTIC WIDE DISTRIBUTION
1-6	8-15	6-13	6-13	7-13	6-13	20-25

*UGR values reflect white baffle and vary based on wattage, lower UGR values available with different finishes.

OUTPUT MULTIPLIER

CCT	CCT SCALE
2400K	0.85
2700K	0.97
3000K	1.00
3500K	1.03
4000K	1.08

TUNABLE WHITE MULTIPLIER

CCT	5000K- 2700K	4000K- 1800K
5000K	1.16	-
4000K	1.08	1.14
3500K	1.04	1.07
3000K	1.00	1.00
2700K	0.96	0.92
2400K	-	0.84
1800K	-	0.69

MEDIA LIGHT LOSS FACTOR

MEDIA	LIGHT LOSS FACTOR
NO LENS	1.06
CGL	1.00
SFL	1.00
FGL	0.89
FSFL	0.81
FLSL	0.82
HCL	0.73

PROJECT NAME:	TYPE:
---------------	-------

SHALLOW REGRESS WARM DIM PERFORMANCE - 25° OPTIC - SOFT FOCUS LENS

INCANDESCENT DIMMING PROFILE

WL 2700K - 1800K	Full on 100%	Dimmed to 80%	Dimmed to 70%	Dimmed to 50%	Dimmed to 20%	Dimmed to 10%	Dimmed to 2%
CCT (K)	2700	2650	2620	2520	2180	1950	1800
Light Output (Lm)	1022	817	715	511	204	102	20
Power (W)	15	12	10.5	7.5	3	1.5	.3
Efficacy (LPW)	68	68	68	68	68	68	68

HALOGEN DIMMING PROFILE

WD 3000K - 1800K	Full on 100%	Dimmed to 80%	Dimmed to 70%	Dimmed to 50%	Dimmed to 20%	Dimmed to 10%	Dimmed to 2%
CCT (K)	3000	2950	2920	2775	2375	2000	1800
Light Output (Lm)	1023	818	716	511	204	102	20
Power (W)	15	12	10.5	7.5	3	1.5	.3
Efficacy (LPW)	68	68	68	68	68	68	68

DEEP REGRESS WARM DIM PERFORMANCE - 60° OPTIC - SOFT FOCUS LENS

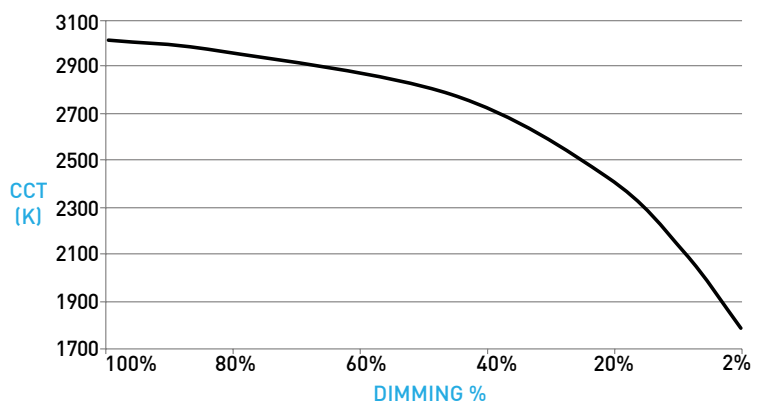
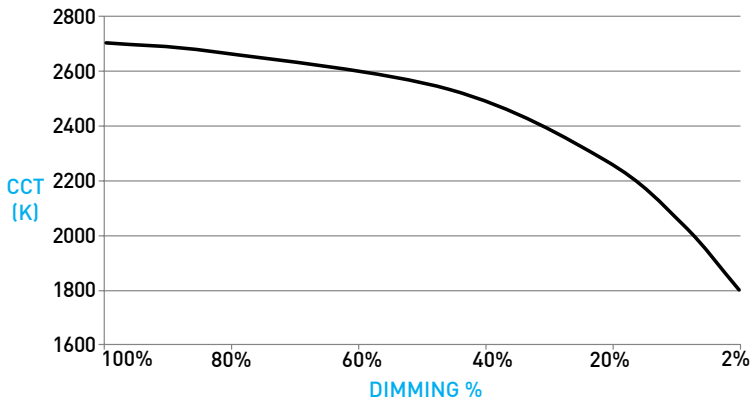
INCANDESCENT DIMMING PROFILE

WL 2700K - 1800K	Full on 100%	Dimmed to 80%	Dimmed to 70%	Dimmed to 50%	Dimmed to 20%	Dimmed to 10%	Dimmed to 2%
CCT (K)	2700	2650	2620	2520	2180	1950	1800
Light Output (Lm)	1022	817	715	511	204	102	20
Power (W)	15	12	10.5	7.5	3	1.5	.3
Efficacy (LPW)	68	68	68	68	68	68	68

HALOGEN WARM DIM PROFILE

WD 3000K - 1800K	Full on 100%	Dimmed to 80%	Dimmed to 70%	Dimmed to 50%	Dimmed to 20%	Dimmed to 10%	Dimmed to 2%
CCT (K)	3000	2950	2920	2775	2375	2000	1800
Light Output (Lm)	1031	824	721	515	206	103	20
Power (W)	15	12	10.5	7.5	3	1.5	.3
Efficacy (LPW)	69	69	69	69	69	69	69

WARM DIM DIMMING CURVES



*LIN-TO-LIN 0-10V PAIRING NOT COMPATIBLE WITH WARM DIM.

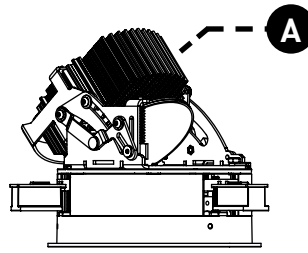
PANELUX™ FRAXION® 4

PROJECT NAME:	TYPE:
---------------	-------

COMPONENT DRAWINGS / DIMENSIONS

A ADJUSTABILITY

Hot-aim tilt up to 40° and 361° rotation with Philips screwdriver, features 5° tilt increment indicators. Sliding pivot point optimizes center beam, ensuring unclipped beam of 15° at 40° tilt and 25° at 30° tilt.



B SHALLOW REGRESS OPTIC

Robust light engine with optimized optic pairing integrates Reflection, Refraction, and TIR offering wallwash, 10°, 15°, 20°, 25°, 40° & 60° beams.



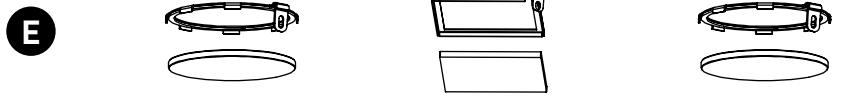
DEEP REGRESS OPTIC

Robust light engine with optimized optic pairing integrates Reflection, Refraction, and TIR offering 10°, 15°, 20°, 25°, 40° & 60° beams.



C 10° FIELD REDUCER

Provided with 10° optic. Pairs Soft Focus Lens, Field Reducer, and Honeycomb Louver to deliver tight 10° beam while reducing field angle by 30%.

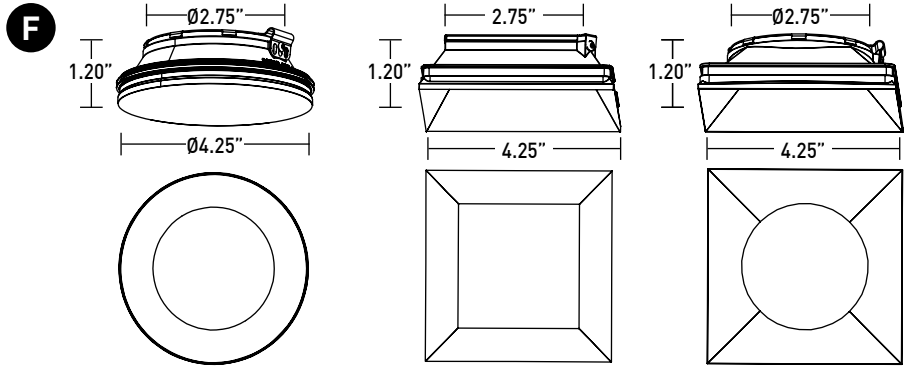


D ADJUSTABLE HCL ASSEMBLY

Honeycomb Louver and Soft Focus Lens attach directly to optic with clip-on lens retainer and adjusts with fixture. Only compatible with no lens baffle. Specified as "H" Effects Device

E EFFECTS DEVICES / LENS RETAINER

Fixture is limited to 1 effects device installed on the baffle, see Section D for Adjustable HCL assembly. Lens retainer allows effects devices to be changed in Dry / Damp locations.

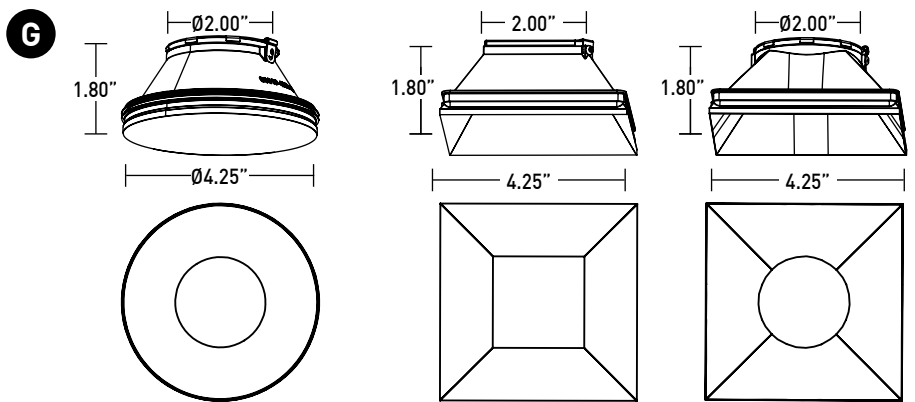


F SHALLOW REGRESS ROUND / SQUARE BAFFLE

Die-cast removable baffle provides easy access to adjustment mechanisms for tilt and rotation. Features 71° glare cutoff, minimizing aperture glare and concealing view into housing. Includes gasket, mitigating light leak.

SHALLOW REGRESS SQUARE TRANSITIONAL BAFFLE

Transitions from square aperture at ceiling to round aperture at light source. Die-cast removable baffle provides easy access to adjustment mechanisms for tilt and rotation. Features 71° glare cutoff, minimizing aperture glare and concealing view into housing. Includes gasket, mitigating light leak.



G DEEP REGRESS ROUND / SQUARE BAFFLE

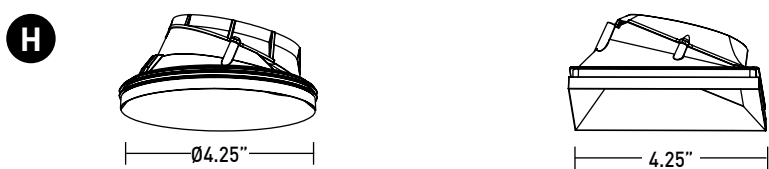
Die-cast removable baffle provides easy access to adjustment mechanisms for tilt and rotation. Features 60° glare cutoff, minimizing aperture glare and concealing view into housing. Includes gasket, mitigating light leak.

DEEP REGRESS SQUARE TRANSITIONAL BAFFLE

Transitions from square aperture at ceiling to round aperture at light source. Die-cast removable baffle provides easy access to adjustment mechanisms for tilt and rotation. Features 60° glare cutoff, minimizing aperture glare and concealing view into housing. Includes gasket, mitigating light leak.

H WALLWASH BAFFLE / MEDIA

Die-cast baffle with angled wide aperture for enhanced uniformity. Features asymmetrical spread lens, sealed in place, combined with auxiliary reflector for optimum performance. Includes gasket, mitigating light leak, and Suction Tool to accommodate baffle removal.



PANELUX™ FRAXION® 4

PROJECT NAME:	TYPE:
---------------	-------

DRIVER / ZONE CONTROL GUIDE

Fixtures ship pre-wired to drivers based on fixture layout / control zone specification. Each driver requires connections to mains voltage and controls as applies. Not all layouts shown, for reference only.

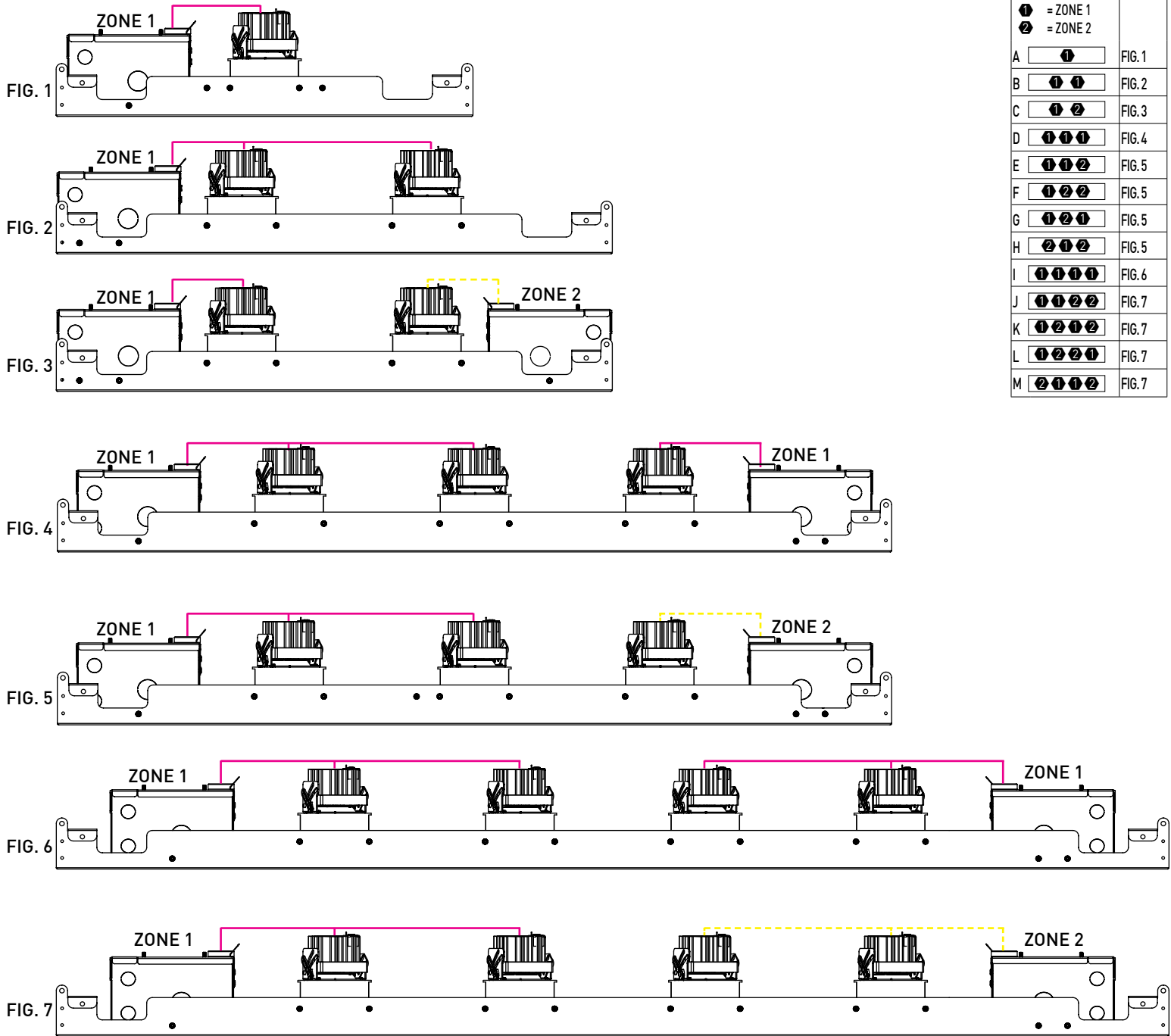


FIGURE	FIXTURE LAYOUT / CONTROL ZONES	REF. FIGURE
	① = ZONE 1 ② = ZONE 2	
A	①	FIG. 1
B	① ①	FIG. 2
C	① ②	FIG. 3
D	① ① ①	FIG. 4
E	① ① ②	FIG. 5
F	① ② ②	FIG. 5
G	① ② ①	FIG. 5
H	② ① ②	FIG. 5
I	① ① ① ①	FIG. 6
J	① ① ② ②	FIG. 7
K	① ② ① ②	FIG. 7
L	① ② ② ①	FIG. 7
M	② ① ① ②	FIG. 7

PANELUX™ FRAXION® 4

PROJECT NAME:	TYPE:
---------------	-------

TECHNICAL

CONSTRUCTION

Downlight: Painted finishes are granulated powder coat. Forged aluminum heat-sink.

Panel: Aluminum and 22 Gauge galvanized steel.

Power Supply: 22 Gauge galvanized steel.

STATIC WHITE LED

2-step MacAdam ellipse LED module available in 80+, 90+ and 97+ CRI configurations in color temperatures of 2700K, 3000K, 3500K and 4000K. 3-step MacAdam ellipse LED module available in 90+ CRI configuration in color temperature of 2400K. Average rated lamp life of 50,000 hours. LED and driver assemblies are field-replaceable.

WARM DIM LED

3-step MacAdam ellipse warm dim LED module available in 90+ CRI configuration. 3000K or 2700K at full brightness, warming to 1800K at full dim. Average rated lamp life of 50,000 hours. LED and driver assemblies are field-replaceable.

TUNABLE WHITE LED

3-step MacAdam ellipse tunable white LED module available in 90+ CRI configuration. Features tuning ranges of 1800K to 4000K and 2700K to 5000K. Average rated lamp life of 50,000 hours. LED and driver assemblies are field-replaceable.

POWER SUPPLY PERFORMANCE AND DIMMING INFORMATION

Power Supply	0-10V					ECO	DALI-2			ATHENA		CASAMBI	
	SG3	SN3	EG1	EN1	DG1	LP1	ED1	DD2	AS1	AD1	CS1	CD1	
Minimum °C	-20 °C	-20 °C	-20 °C	-20 °C	-20 °C	0 °C	-20 °C	-20 °C	0 °C	0 °C	-20 °C	-20 °C	
Maximum °C	40 °C	40 °C	40 °C	40 °C	40 °C	40 °C	40 °C	40 °C	40 °C	40 °C	40 °C	40 °C	
Dimming %	1.0%	1.0%	0.1%	0.1%	0.1%	0.1%	0.1%	0.1%	0.1%	0.1%	0.1%	0.1%	

Note: For LP1, EG1 and EN1 drivers consult chart on page x to confirm appropriate dimming curve for compatibility with selected control.

WALLWASH SPACING

Recommended fixture spacing is 36" (914mm) on center with 36" (914mm) setback from wall plane. Reference ww guide for.....

LISTING

UL listed to UL1598 standard for Dry / Damp locations.
NEMA 410 Compliant.

BUY AMERICAN ACT

All Panelux™ Fraxion®4 configurations are Buy American Act compliant.

DECLARE

LBC Red List Approved.

WEIGHT

3.50lbs per foot.

SETBACKS

- Minimum 0.50" setback from combustible and non-combustible materials on all sides and top of housing.
- Minimum 3.00" setback from insulation material having max R-Value 30 on all sides and top of housing.
- Minimum 6.00" setback from polycell spray foam insulation having max R-Value 60.

LIMITED WARRANTY

Manufacturer's Limited Warranty guarantees product(s) listed to be free from defects in material and workmanship under normal use and service for 1-year. LED and power supplies are warranted to operate with 70% of original flux and remain within a range of 3 duv for a period of 5-years. 10-year Lutron Advantage limited warranty available on Lutron equipped systems. Warranty period begins from the date of shipment by Seller. [Consult website for full warranty terms and conditions.](#)

PROJECT NAME:	TYPE:
---------------	-------

DIMMING COMPATIBILITY

LUTRON DRIVER COMPATIBILITY

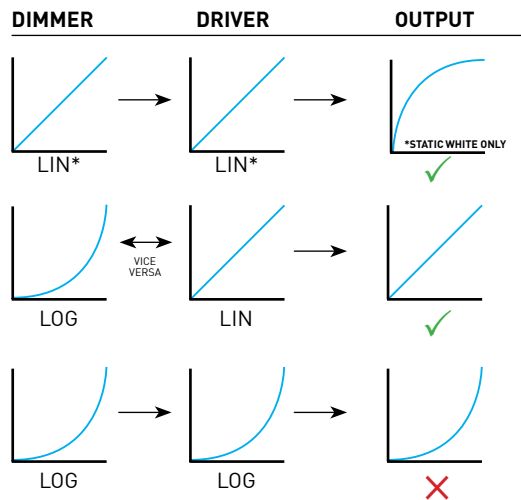
Power supply LP1 Lutron Product Family	Part No.
PowPak Dimming Modules	RMJ-ECO32-DV-B
PowPak Dimming Modules	FCJ/FCJS-ECO
Energi Savr Nodes	QSN-1ECO-S
GRAFIK Eye QS control unit Homeworks QS control unit	QSN-2ECO-S
GRAFIK Eye QS control unit Homeworks QS control unit	QSGRJ-_E (wireless) QSGR-_E
Quantum Hub	QP2-__2C
Quantum Hub	QP2-__4C
Quantum Hub	QP2-__6C
Quantum Hub	QP2-__8C
Homeworks QS power module myRoom Plus power module	LQSE-2ECO-D



eldoLED DRIVER COMPATIBILITY

Power supply EG1 / SG3 Manufacturer	Family/Model #
Busch-Jaeger	2112U-101
Jung	240-10
Leviton Lighting Controls	IP710-DLX
Lightolier Controls	ZP600FAM120
Merten	5729
Pass & Seymour	CD4FB-W
The Watt Stopper	DCLV1
Synergy	ISD BC
Crestron®	GLX-DIMFLV8
Crestron®	GLXP-DIMFLV8
Crestron®	GLPAC-DIMFLV4-*
Crestron®	GLPAC-DIMFLV8-*
Crestron®	GLPP-DIMFLVEX-PM
Crestron®	GLPP-1DIMFLV2EX-PM
Crestron®	GLPP-1DIMFLV3EX-PM
Crestron®	DIN-A08
Crestron®	DIN-4DIMFLV4
Crestron®	CLS-EXP-DIMFLV
Crestron®	CLCI-1DIMFLV2EX
Power supply EN1 / SN3 Manufacturer	Family/Model #
Lutron Electronics	Nova T® - NTFTV
Lutron Electronics	Diva® - DVTV
Lutron Electronics	Nova® - NFTV
Lutron Electronics	GrafixEye® GRX-TVI w GRX3503
Lutron Electronics	Energy Savr Node™ - QSN-4T16-S
Lutron Electronics	TVM2 Module
Sensor Switch	nIO EZ
ABB	SD/S 2.16.1

ANALOG DRIVERS AND DIMMERS



LIN = LINEAR
LOG = LOGARITHMIC
*LIN-TO-LIN NOT COMPATIBLE FOR WARM-DIM OR TUNABLE WHITE